

自行調整腳墊·自復位 EH 22731.



產品描述

適合作止動元件、支撐元件及推力墊，以及裝配至固夾元件上。
通過復位到平行位置，自對準墊的接觸點提供限定的初始位置，從而防止在插入工件時墊處於傾斜位置。

材質

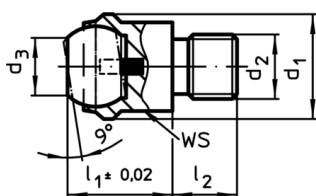
- 彈簧零件
- 熱塑性PUR
- 珠子
- 軸承鋼，硬化，明亮的
 - 塑膠，玻璃纖維強化
- 本體
- 鋼，熱處理，磷酸鹽處理
 - 鋅壓鑄，烤漆，黑色

更多資訊

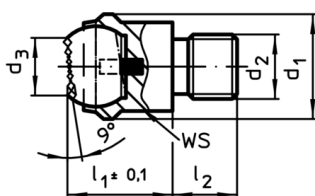
注意事項

珠子有防止旋轉保護
容積承載量對鋼和不鏽鋼設計是合法的。

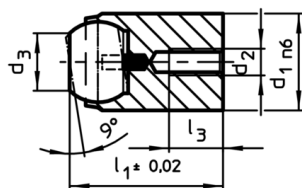
圖面



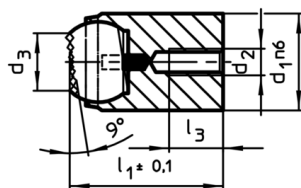
picture 1



picture 2



picture 3



picture 4

訂單資訊

尺寸			球 直徑	定位孔 Ø H7 深度 min	WS [mm]	靜態荷重能力 max. [kN]	起始扭力 max. [Nm]	RoHS	REACH	品號				
d ₁	d ₂	d ₃									l ₁	l ₂	l ₃	
[mm]														
有公牙，平面珠子，平坦面 – 相片 1, 熱處理鋼														
13	M 6	7,2	13	8	-	10	-	11	10	10,0	13	RoHS 認證	contains no SVHC materials	22731.0012
13	M 8	7,2	13	8	-	10	-	11	10	25,0	14	RoHS 認證	contains no SVHC materials	22731.0013
20	M 8	10,5	18	10	-	16	-	17	25	25,0	39	RoHS 認證	contains no SVHC materials	22731.0018
20	M10	10,5	18	10	-	16	-	17	25	46,0	40	RoHS 認證	contains no SVHC materials	22731.0019
20	M12	10,5	18	12	-	16	-	17	25	82,0	44	RoHS 認證	contains no SVHC materials	22731.0020
30	M16	20,0	27	16	-	25	-	27	90	206,0	153	RoHS 認證	contains no SVHC materials	22731.0030
50	M20	34,5	35	20	-	40	-	41	165	407,0	491	RoHS 認證	contains no SVHC materials	22731.0050
50	M24	34,5	35	24	-	40	-	41	165	698,0	526	RoHS 認證	contains no SVHC materials	22731.0060

¹⁾ 只適用於當需要最小的孔深時。

尺寸							定位孔		WS	靜態荷重能力 max.	起始扭力 max.	⌘	RoHS	REACH	品號
d ₁	d ₂	d ₃	l ₁	l ₂ -0,5	l ₃ max.	球 直徑	Ø H7	深度 min	[mm]	[kN]	[Nm]				
[mm]															
有公牙，平面珠子，平坦面 – 相片 1, 不銹鋼															
13	M 6	7,2	13	8	-	10	-	-	11	10	10,0	13	RoHS 認證	contains no SVHC materials	22731.0112
13	M 8	7,2	13	8	-	10	-	-	11	10	25,0	14	RoHS 認證	contains no SVHC materials	22731.0113
20	M 8	10,5	18	10	-	16	-	-	17	25	25,0	39	RoHS 認證	contains no SVHC materials	22731.0118
20	M10	10,5	18	10	-	16	-	-	17	25	46,0	40	RoHS 認證	contains no SVHC materials	22731.0119
20	M12	10,5	18	12	-	16	-	-	17	25	82,0	44	RoHS 認證	contains no SVHC materials	22731.0120
30	M16	20,0	27	16	-	25	-	-	27	90	206,0	153	RoHS 認證	contains no SVHC materials	22731.0130
50	M20	34,5	35	20	-	40	-	-	41	165	407,0	491	RoHS 認證	contains no SVHC materials	22731.0150
50	M24	34,5	35	24	-	40	-	-	41	165	698,0	526	RoHS 認證	contains no SVHC materials	22731.0160
有公牙，平面珠子，肋紋面 – 相片 2, 熱處理鋼															
13	M 6	7,2	13	8	-	10	-	-	11	10	10,0	13	RoHS 認證	contains no SVHC materials	22731.0312
13	M 8	7,2	13	8	-	10	-	-	11	10	25,0	14	RoHS 認證	contains no SVHC materials	22731.0313
20	M 8	10,5	18	10	-	16	-	-	17	25	25,0	39	RoHS 認證	contains no SVHC materials	22731.0318
20	M10	10,5	18	10	-	16	-	-	17	25	46,0	40	RoHS 認證	contains no SVHC materials	22731.0319
20	M12	10,5	18	12	-	16	-	-	17	25	82,0	44	RoHS 認證	contains no SVHC materials	22731.0320
30	M16	20,0	27	16	-	25	-	-	27	90	206,0	152	RoHS 認證	contains no SVHC materials	22731.0330
50	M20	34,5	35	20	-	40	-	-	41	165	407,0	487	RoHS 認證	contains no SVHC materials	22731.0350
50	M24	34,5	35	24	-	40	-	-	41	165	698,0	521	RoHS 認證	contains no SVHC materials	22731.0360
對於定位孔，平面滾珠，平坦表面 – 相片 3, 熱處理鋼															
12 n6	M 3	7,2	17	-	3,2	10	12	12	-	10 ¹⁾	1,3	14	RoHS 認證	contains no SVHC materials	22731.0412
18 n6	M 4	10,5	23	-	4,0	16	18	14	-	25 ¹⁾	2,9	40	RoHS 認證	contains no SVHC materials	22731.0418
28 n6	M 5	20,0	34	-	6,0	25	28	22	-	90 ¹⁾	6,0	150	RoHS 認證	contains no SVHC materials	22731.0428
對於定位孔，平面滾珠，平坦表面 – 相片 3, 不銹鋼															
12 n6	M 3	7,2	17	-	3,2	10	12	12	-	10 ¹⁾	1,3	14	RoHS 認證	contains no SVHC materials	22731.0452
18 n6	M 4	10,5	23	-	4,0	16	18	14	-	25 ¹⁾	2,9	40	RoHS 認證	contains no SVHC materials	22731.0458
28 n6	M 5	20,0	34	-	6,0	25	28	22	-	90 ¹⁾	6,0	150	RoHS 認證	contains no SVHC materials	22731.0468
針對定位孔，平面珠子，肋紋面 – 相片 4, 熱處理鋼															
12 n6	M 3	7,2	17	-	3,2	10	12	12	-	10 ¹⁾	1,3	14	RoHS 認證	contains no SVHC materials	22731.0712
18 n6	M 4	10,5	23	-	4,0	16	18	14	-	25 ¹⁾	2,9	40	RoHS 認證	contains no SVHC materials	22731.0718
28 n6	M 5	20,0	34	-	6,0	25	28	22	-	90 ¹⁾	6,0	150	RoHS 認證	contains no SVHC materials	22731.0728

¹⁾ 只適用於當需要最小的孔深時。

應用範例

